

# DCEZD-63

## Drag Chain Conveyor

The Model DCEZD-63 is a three strand drag chain conveyor designed to handle pallets. With EZLogic® Zone Controller, pallets are accumulated with zero pressure, reducing the possibility of collision that may result in product damage.

- 3 Strand Design
- EZDrive™ System (Individual zone drive)
- EZLogic® Accumulation System
- Modular Assembly
- Adjustable DCS-Type Floor Supports Available



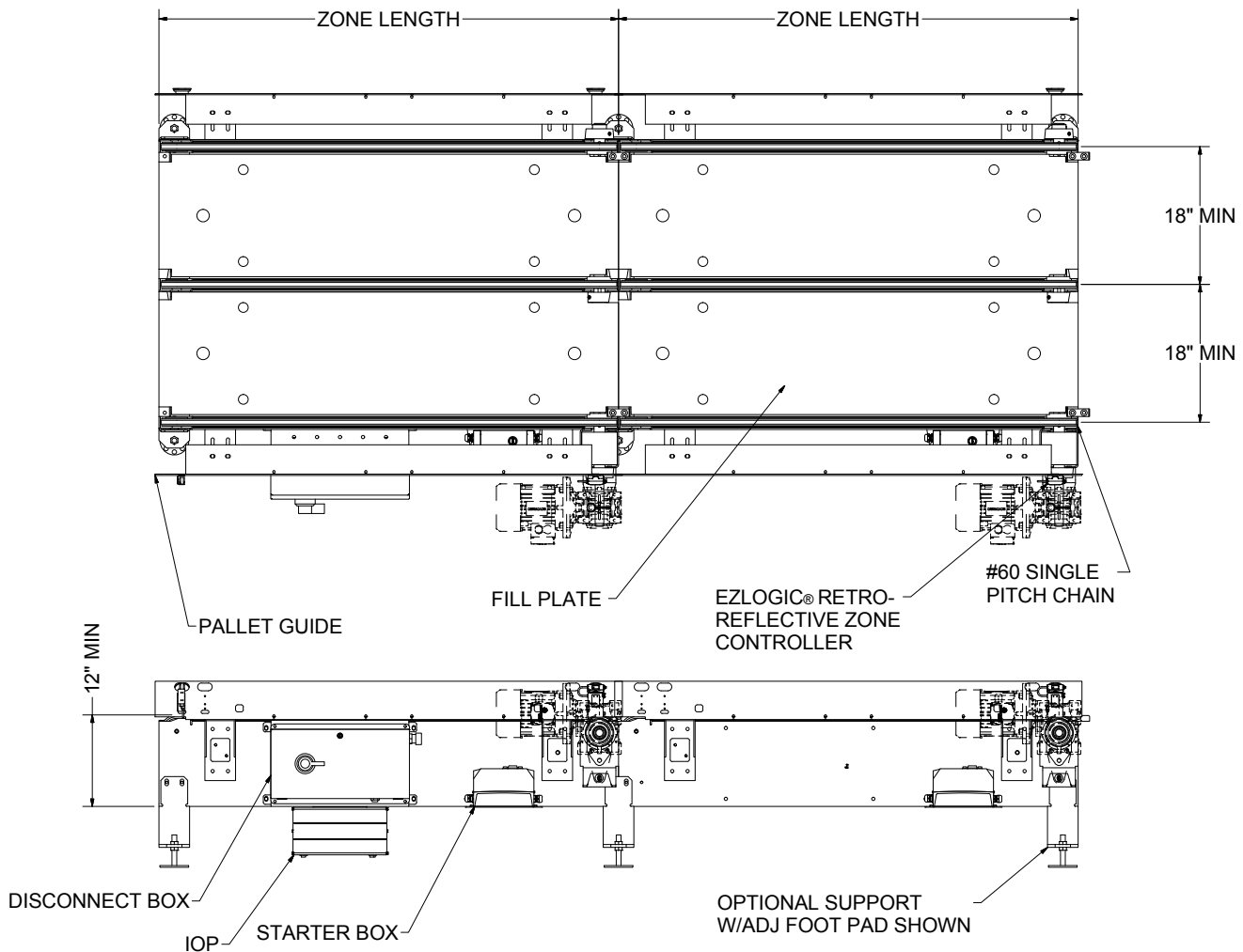
U.S. Patent Numbers  
5,862,907 • 7,243,781 • 7,591,366  
Other Patents Pending.

| OVERALL LENGTH "A" | FRAME WIDTH STRAND CENTERS | 37 7/8" | 43 7/8" | 49 7/8" | 55 7/8" | 61 7/8" | 67 7/8" | 73 7/8" | 79 7/8" | 85 7/8" | 91 7/8" | 97 7/8" |
|--------------------|----------------------------|---------|---------|---------|---------|---------|---------|---------|---------|---------|---------|---------|
|                    |                            | 18"     | 21"     | 24"     | 27"     | 30"     | 33"     | 36"     | 39"     | 42"     | 45"     | 48"     |
| 10'                | WEIGHTS                    | 925     | 965     | 1004    | 1044    | 1083    | 1125    | 1166    | 1206    | 1245    | 1281    | 1325    |
| Per Foot Weight    |                            | 93      | 97      | 100     | 104     | 108     | 113     | 117     | 121     | 125     | 128     | 133     |



## HOW IT WORKS

The conveyor is made up of accumulation zones. Each zone contains an individual zone drive interfaced to Hytrol's EZLogic® Zone Controllers which sense product presence and control the accumulation and release of the zones by starting and stopping the zone drives.



## • STANDARD SPECIFICATIONS

**CHAIN** – #60 single pitch conveyor chain (straight sidebar).

**CHAIN GUIDE** – UHMW polyethylene.

**FRAME** – 11 1/8 in. x 7 ga. powder painted formed steel angle. 7 ga. formed coupling channels located at infeed and discharge ends of each module.

**DRIVE SPROCKETS** – Hardened #60 with 1 7/16 in. dia. steel shaft.

**BEARINGS** – Sealed, pre-lubricated, self aligning, ball bearings on drive.

**EZLogic® ZONE CONTROLLER**—Located in each zone. NEMA 1, 2, IP62. UL Approved.

**ACCUMULATION ZONES**—60 in. long sections with EZLogic® Accumulation.

**IOP**—Provides 27VDC, 100 watt power for EZLogic® accumulation system - contains slots for 4 input/output boards. Requires 120VAC or 230VAC single phase input.

**MOTOR** – 3/4 HP – 230/460/575V– 3 PH. 60 HZ. gearmotor, shaft mounted at discharge end of zone.

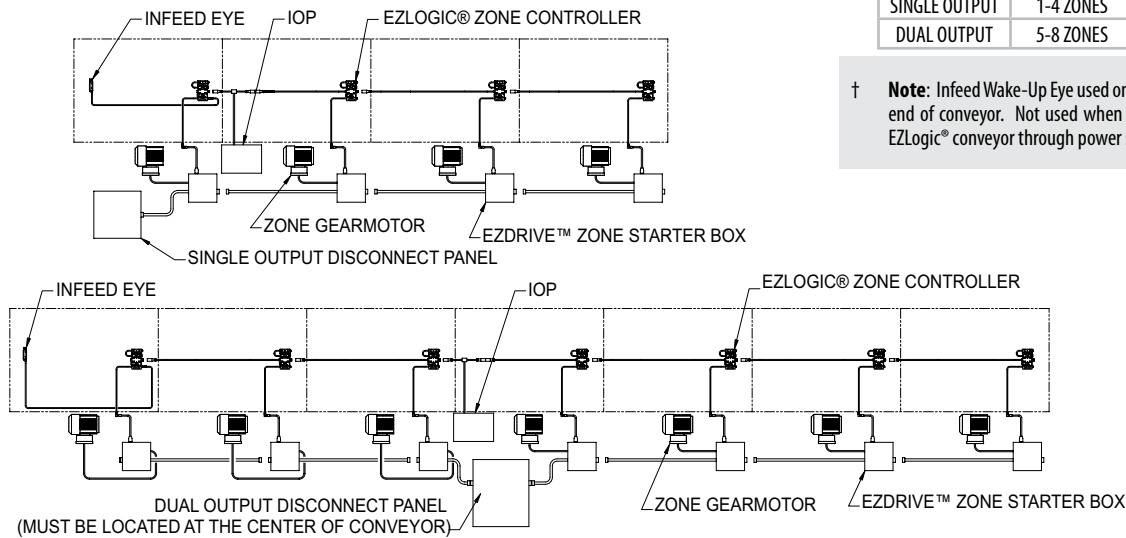
**CONVEYING SPEED** –30 FPM.

**CAPACITY**—3,000 lbs. maximum per zone at 30 FPM.

**FLOOR SUPPORTS**—Now supplied as optional equipment.

| DISCONNECT PANEL | 230V        | 460V        |
|------------------|-------------|-------------|
|                  | 3 Ph. 60 Hz | 3 Ph. 60 Hz |
| SINGLE OUTPUT    | 1-4 ZONES   | 1-8 ZONES   |
| DUAL OUTPUT      | 5-8 ZONES   | 9-16 ZONES  |

† **Note:** Infeed Wake-Up Eye used only on terminating infeed end of conveyor. Not used when connecting to upstream EZLogic® conveyor through power supply isolation cable.



### EZLOGIC® ACCUMULATION SYSTEM

Hytrol's EZLogic®, or "Electronic Zero-pressure Logic" Accumulation System, combines the sensing accuracy of photo-electronics with discrete electronic logic control without the use of a PLC or pneumatic logic components. The EZLogic® Accumulation System provides many features including:

**Zero-Pressure Accumulation of Product**

**Zone Stop - Function** is built in. Any zone may be transformed into a workstation by connecting a dry contact switching device to the auxiliary port of the EZLogic® Zone Controller. This feature is always used at the discharge end of the conveyor line, and may be used at any other location where a zone stop is required.

**Dynamic Zone Allocation** – Automatically adjusts the conveyor's zone length to accommodate the length of the product being conveyed. Improves conveyor efficiency and system flexibility.

**Sleep Feature** – Stops chains from running when no product is present, reducing noise, reducing energy consumption and extending chain life.

**Unloading Zone Feature - Zone On Delay** – Timer delays the zone immediately upstream from a removed load, preventing it from driving for a set time. This feature is ideal where loads are routinely removed from the conveyor with a lift truck.

**Loading Zone Feature** – Zone detects load being placed onto the conveyor with a fork truck and stops the zone from driving and automatically prevents any loads in zones upstream from entering loading area.

## • OPTIONAL EQUIPMENT

**FLOOR SUPPORTS**—DCS Type floor supports are available with a wide range of adjustment. Specify top of chain elevation. One support required at every bed joint and ends of conveyor. Holes in feet for lagging to floor.

**ACCUMULATION ZONES**—48 in., 54 in., and 66 in. intermediate sections with EZLogic® Accumulation. Contact factory for other lengths.

**CONVEYING SPEED**—Speeds other than 30 FPM will require gearmotor change (contact factory).

**EZDrive™ System**—Variable Frequency Drive for adjusting conveying speed or adjusting acceleration and deceleration time.

**EZLogic®** – See EZLogic® Components Page.